



# WHITE HOUSE

OFFICE SUITES TO LET ON A FLEXIBLE BASIS



# WHITE HOUSE

## LOCATION

On the door step of New Street Station and tram line in the heart of Birmingham's bustling and popular bar and restaurant scene and amongst major retailers.

Approximately 5 minutes walk from Snow Hill Rail Station and the Colmore Row Business District.

111 New Street  
Birmingham  
B2 4EU

*Refurbished office suites available close to Birmingham New Street rail station.*

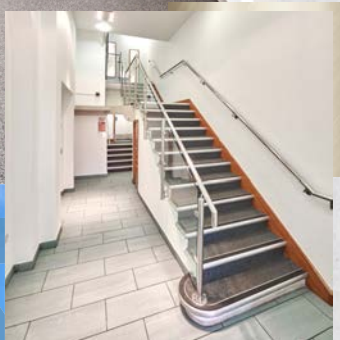
*Suites of 370 sq ft, to 1,500 sq ft available on flexible lease terms.*



## SPECIFICATION

- Suspended ceilings
- Modern recessed lighting
- Perimeter trunking
- Central heating
- WCs & kitchens on each floor
- Lift and disabled access
- Shower and changing facilities





## **BUSINESS RATES**

Business Rates are payable direct to the local authority. These suites may benefit from small Business Rates relief and interested parties should check this directly with the local authority.

## **LEASE TERMS**

New effective full repairing and insuring leases are available for a term of years to be agreed.

The quoting rent is on application to the joint agents.

## **SERVICE CHARGE**

A Service Charge will apply for the services provided by the landlord.

## **ENERGY PERFORMANCE CERTIFICATE**

C59

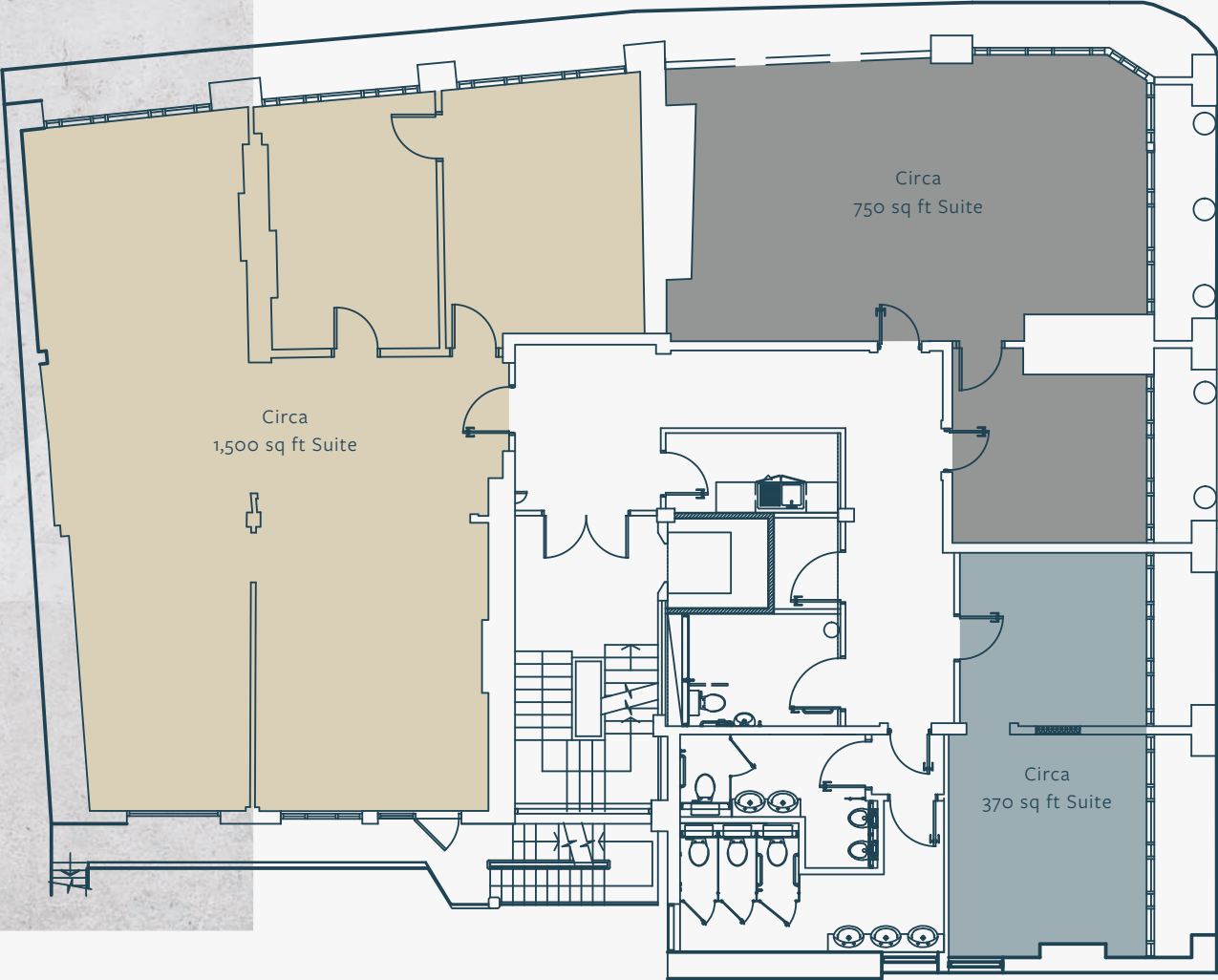
## **LEGAL COSTS**

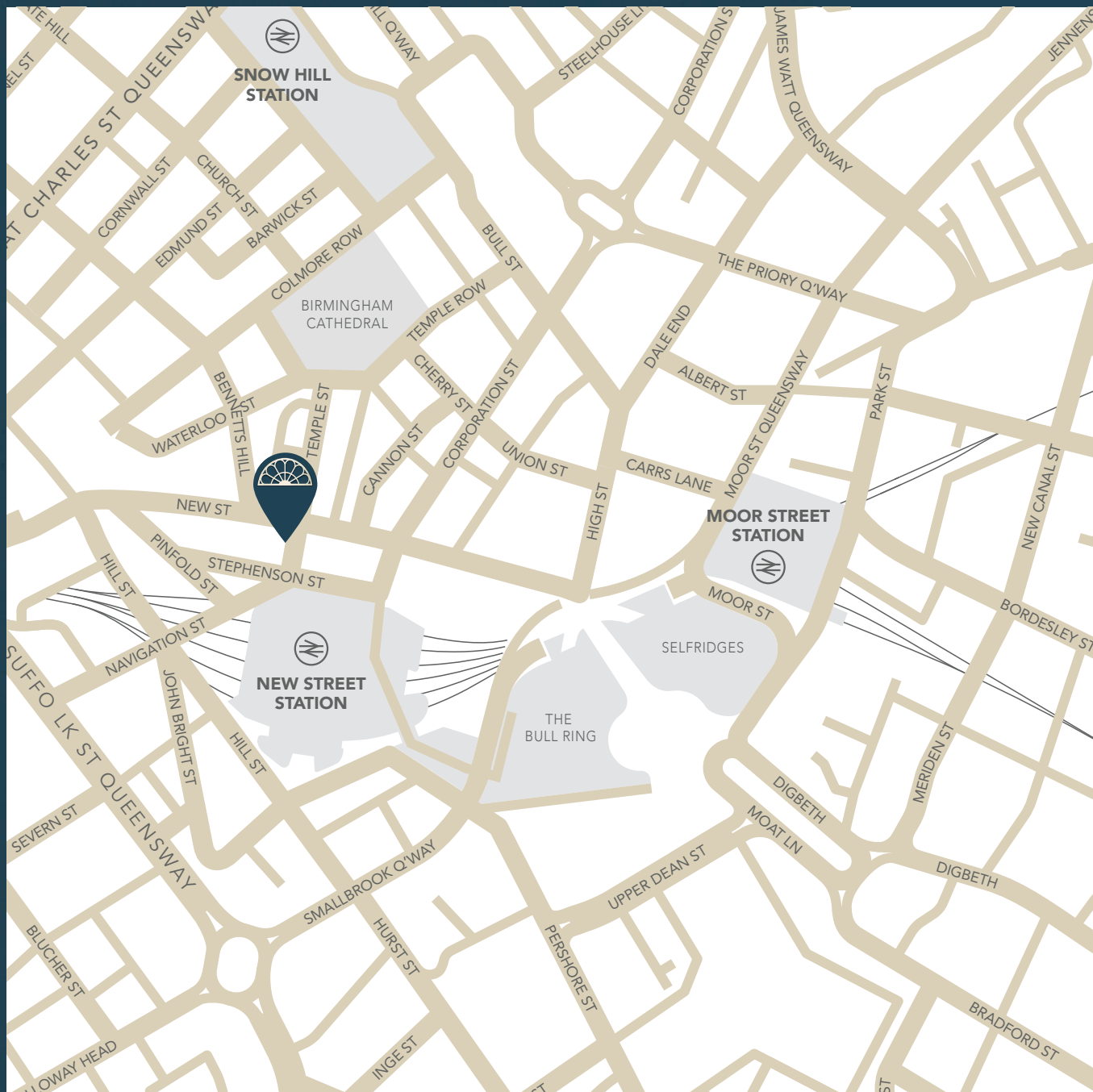
Each party is to pay its own legal costs.

## **VAT**

The property is elected for VAT

TYPICAL FLOOR PLAN





[www.whitehousebirmingham.co.uk](http://www.whitehousebirmingham.co.uk)



Viewings by appointment only



[Charles.Warrack@fishergerman.co.uk](mailto:Charles.Warrack@fishergerman.co.uk)  
0121 561 7885 [fishergerman.co.uk](http://fishergerman.co.uk)



[Evie.davies@jll.com](mailto:Evie.davies@jll.com)  
07561 878180 [jll.co.uk](http://jll.co.uk)